

## Human intelligence determined by volume and location of gray matter tissue in brain

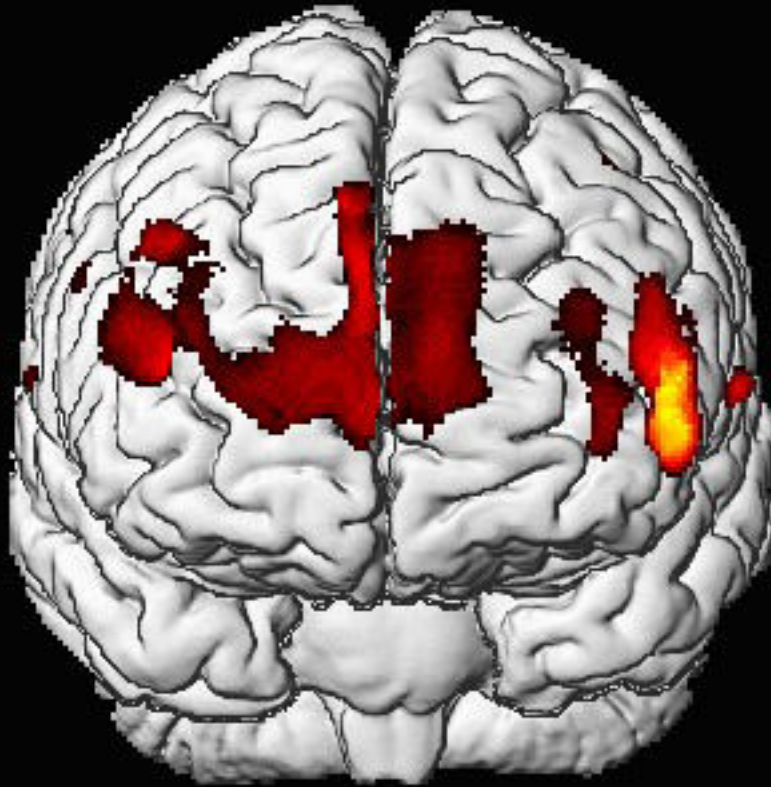
Escrito por Richard Haier et al.  
Terça, 03 Fevereiro 2009 13:11

---

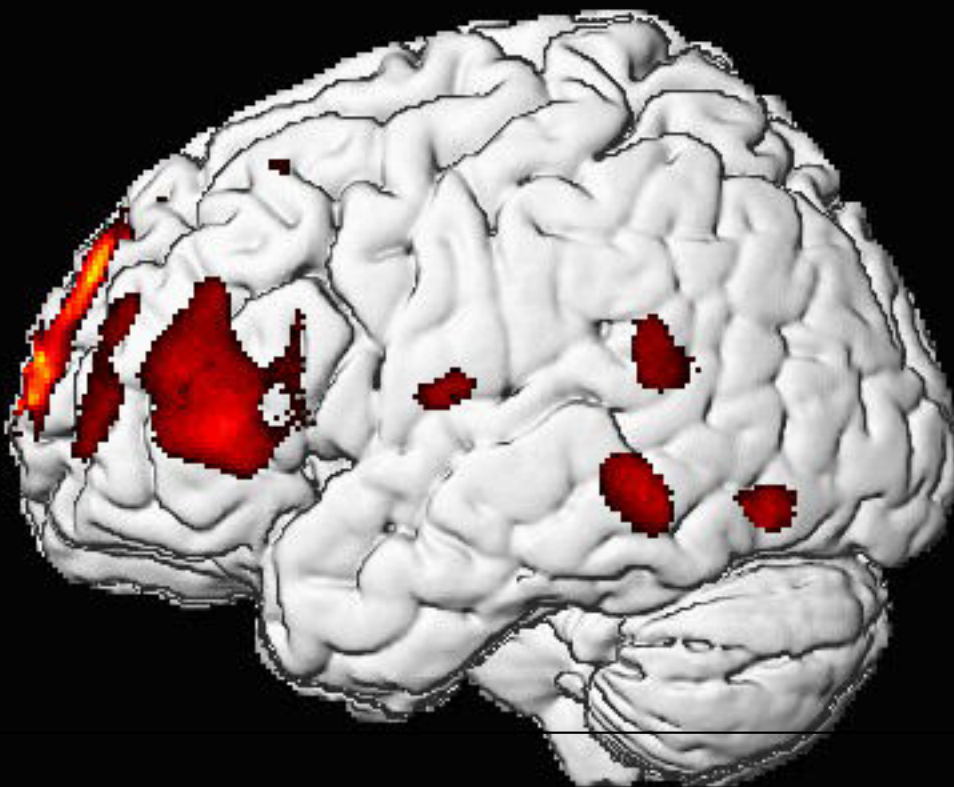
General human intelligence appears to be based on the volume of gray matter tissue in certain regions of the brain, UC Irvine College of Medicine researchers have found in the most comprehensive structural brain-scan study of intelligence to date.

The study also discovered that because these regions related to intelligence are located throughout the brain, a single “intelligence center,” such as the frontal lobe, is unlikely.

# **IQ/Gray Matter Correla**



**Frontal  
Lobe**



**Left  
Hem**

# Human intelligence determined by volume and location of gray matter tissue in brain

Escrito por Richard Haier et al.  
Terça, 03 Fevereiro 2009 13:11

---

[REDACTED]